

## Landscape Initiative – Conservation Beyond Boundaries...

Clean water, abundant wildlife, and productive agriculture are interconnected. Conservation doesn't have man-made boundaries.

These projects **accelerate** implementation of conservation that:

- benefit both landowners and the environment
- improve water quality
- enhance wildlife habitat
- maintain agricultural production



*Illinois River and  
Eucha-Spavinaw  
Watershed Initiative*



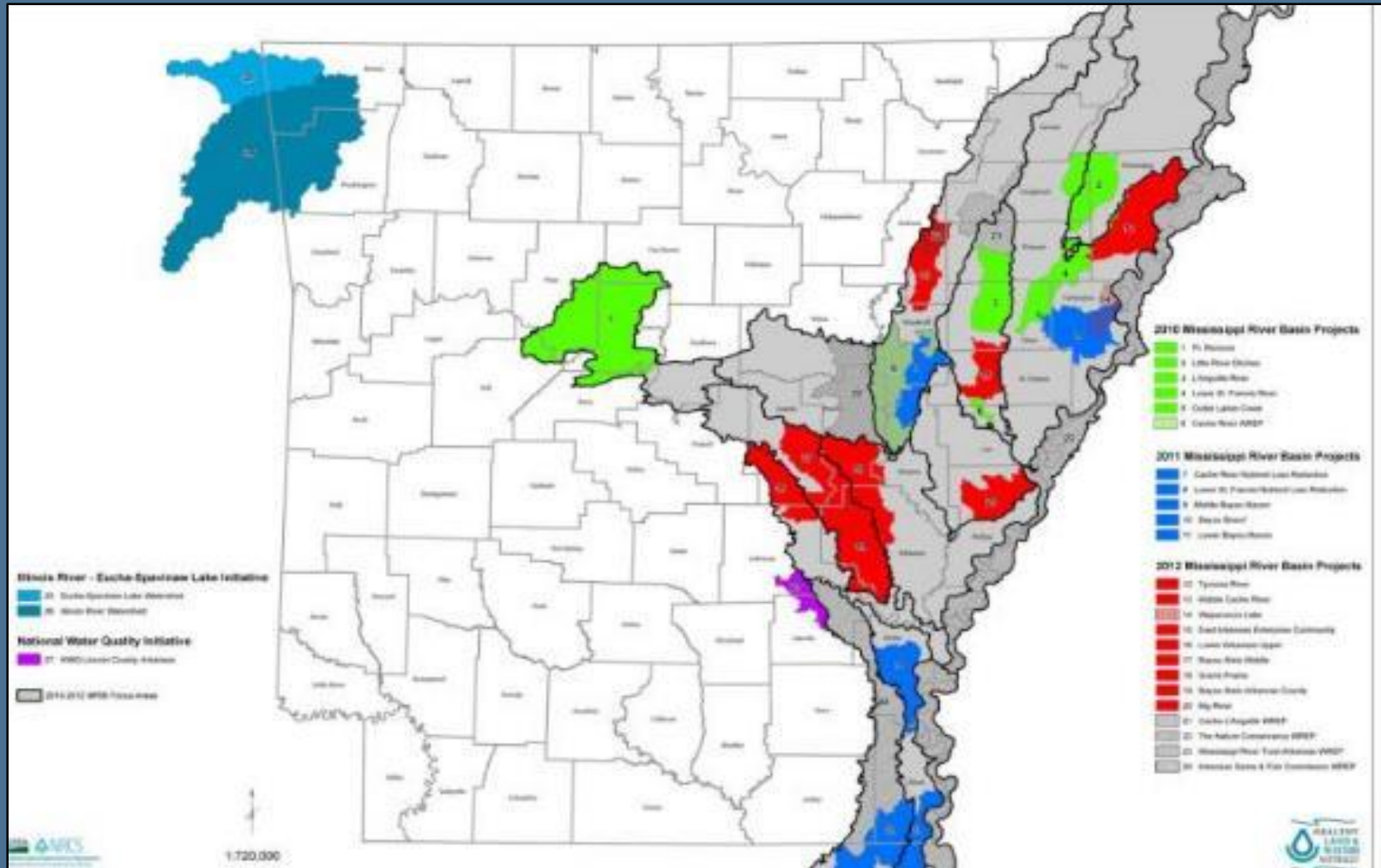
*Mississippi River Basin  
Healthy Watershed  
Initiative*

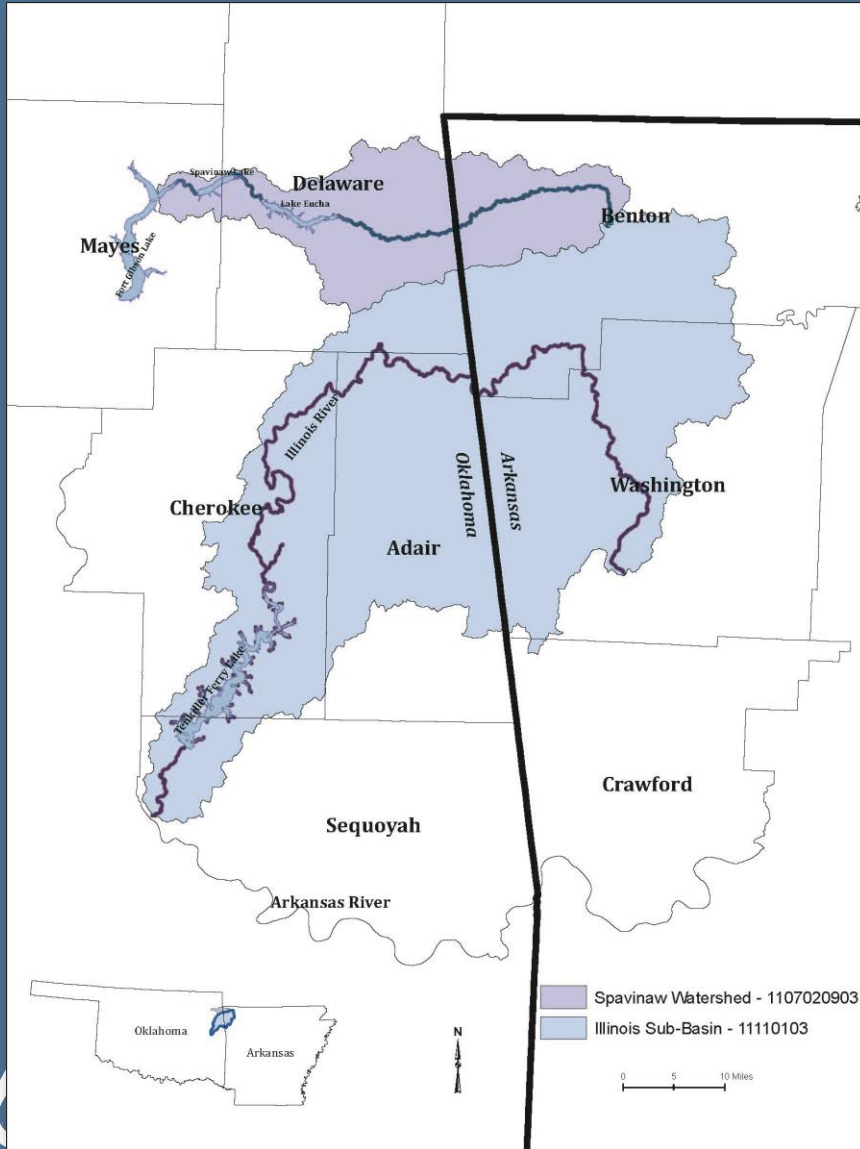


*Bayou Bartholomew  
Water Quality  
Initiative*



# ARKANSAS INITIATIVES





## Resource Concerns in the Illinois River/Eucha-Spavinaw Watersheds

### Water quality (Primary)

- Excessive nutrients and organics in ground and surface water
- Excessive suspended sediment and turbidity in surface water
- Harmful levels of pathogens in surface water

### Soil Erosion (Secondary)

# Impact of Practices

## Top Practices implemented

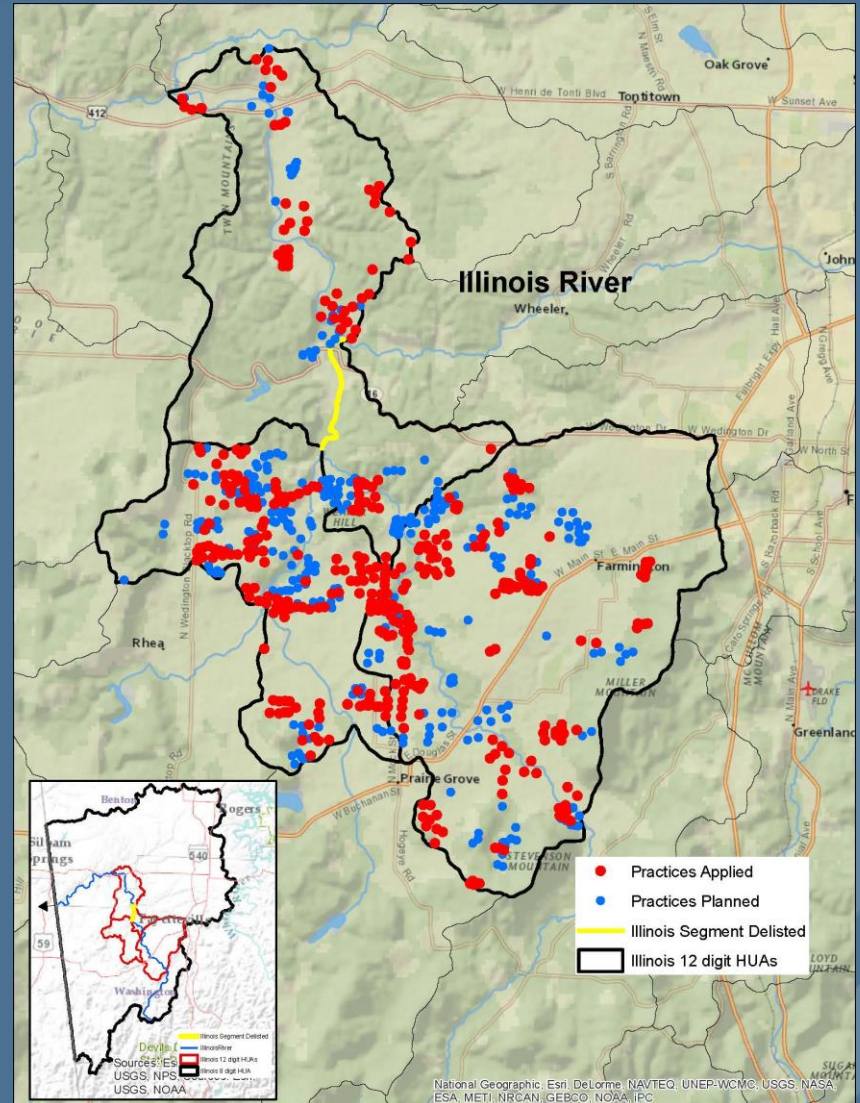
Amendment for Treatment of Ag/Waste

Forage and Biomass Planting

Waste Storage Facility  
Roof and Cover

Fencing

Prescribed Grazing





### **Arkansas**

***Acres treated: 43,070***

***Contracts: 531***

***Obligations: \$15.1 million***

***Total Project Acres: 576,517***

### **Oklahoma**

***Acres treated: 19,210***

***Contracts: 99***

***Obligations: \$3.4 million***

***Total Project Acres: 739,156***

*Since Initiative Began*



**Mississippi River Basin Initiative  
Focus Areas, 2012  
Arkansas**

**2012 Focus Areas**

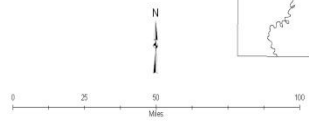
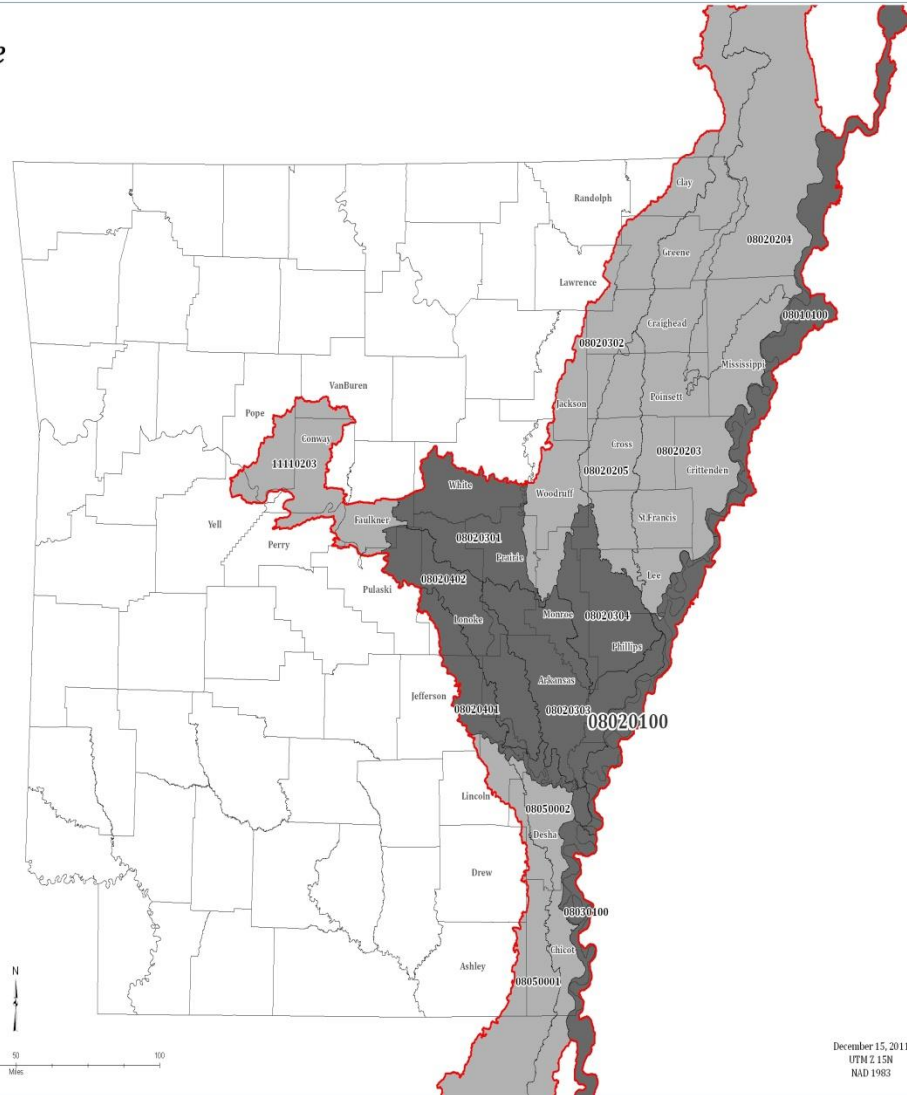
- 08020301 - Lower White-Des Arc
- 08020303 - Lower White
- 08020304 - Big
- 08020401 - Lower Arkansas
- 08020402 - Bayou Meto

**Batture Lands**

- 08010100 - Lower Mississippi-Memphis
- 08020100 - Lower Mississippi-Helena
- 08030100 - Lower Mississippi-Greenville

**Existing Focus Areas**

- 08020203 - Lower St. Francis
- 08020204 - Little River Ditches
- 08020205 - L'Anguille
- 08020302 - Cache
- 08050001 - Boeuf River
- 08050002 - Bayou Macon
- 11110203 - Lake Conway-Point Remove
- Comprehensive MRBI Focus Area



# Impact of Practices

## Top Practices implemented

Grade Stabilization Structures

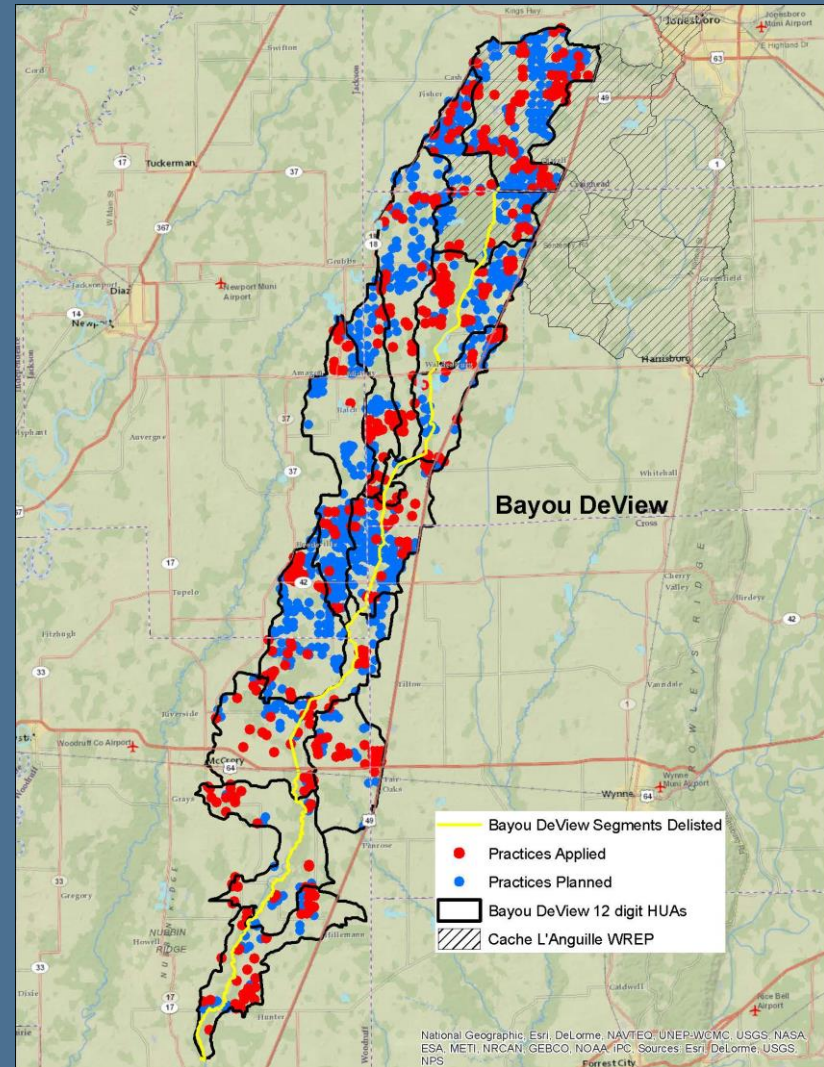
Irrigation Land Leveling

Water Control Structures

Irrigation Reservoirs

Pumping Plant

Some management practices such as irrigation water management and nutrient management.



# Impact of Practices

## Top Practices implemented

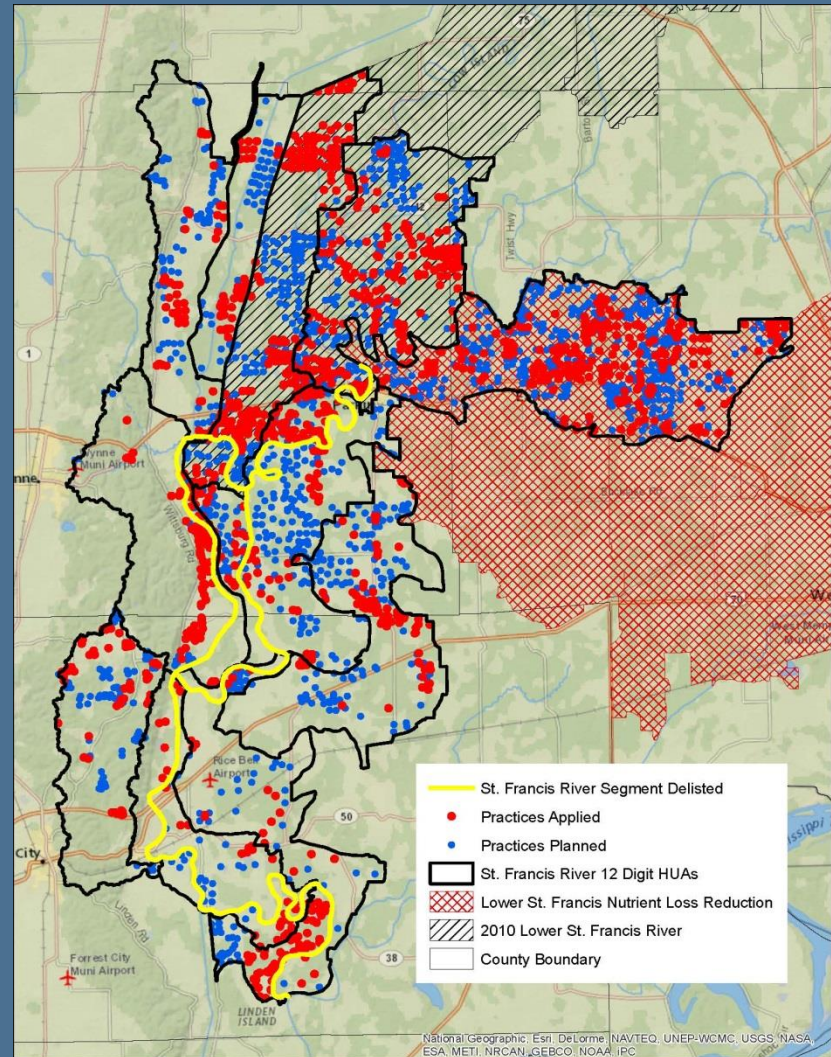
Irrigation Land Leveling

Water Control Structures

Irrigation Reservoirs/Pipelines

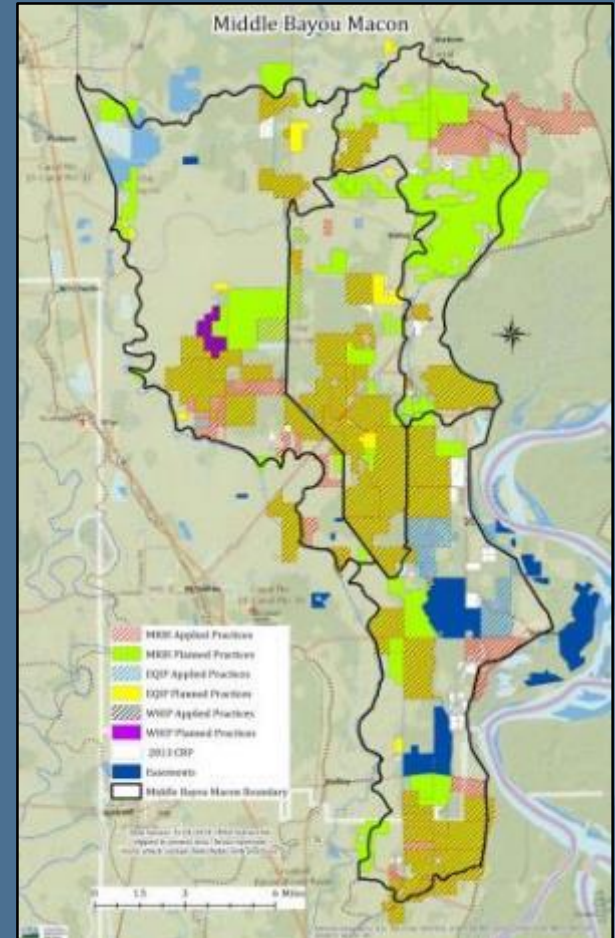
Residue/Tillage Management

Nutrient Management





# MIDDLE BAYOU MACON SUCCESS



# NWQI - BAYOU BARTHOLOMEW

Goal: Remove streams/ water bodies from 303d list, from threatened status, or from contributing to impairments, or to address a TMDL plan.

- Resource concerns – sediment, nutrients
- 3 Upper Sub-watersheds selected with input from STC
- Total watershed area – 62,000 Ac
- Area treated – 16,000 Ac
- EOF/In-stream monitoring





NRCS, Arkansas is a member of the Arkansas Conservation Partnership:

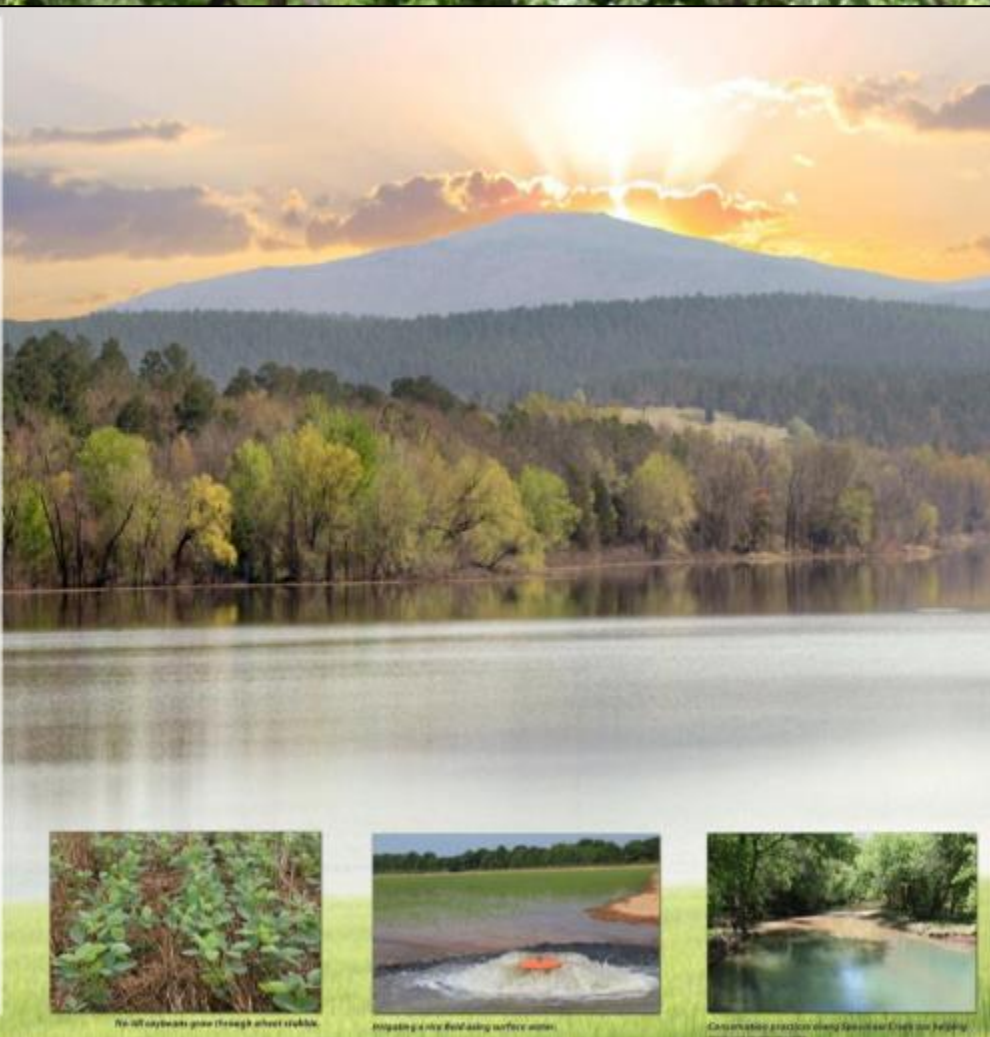
- Arkansas Natural Resources Commission
- Arkansas Association of Conservation Districts
- Arkansas Association of Conservation District Employees
- University of Arkansas Cooperative Extension Service
- University of Arkansas, Pine Bluff
- Arkansas Forestry Commission
- Arkansas Resource Conservation and Development Council, Inc.



# ARKANSAS CONSERVATION PARTNERSHIP



*From the Mississippi Delta to the Ozark Mountains, Arkansas is blessed with an abundance of natural resources. The USDA Natural Resources Conservation Service in Arkansas strives to assist farmers, ranchers and foresters in enhancing soil health, water quality and water quantity in the Natural State.*



Soil health benefits grow through wheat stubble.

Integrating a dry field using surface water.

Conservation practices along streams can help.

## Questions?

For more information, contact your local Natural Resources Conservation Service office.

Dianne Schlenker  
 Initiative Coordinator  
 501-412-9852 cell  
 501-301-3152 office  
 @ar.usda.gov

