

An aerial photograph of a creek winding through a lush, green forest. A large, light-colored sandbar is visible in the lower-left portion of the creek. The water is a murky, brownish-green color. The surrounding land is covered in dense trees and vegetation.

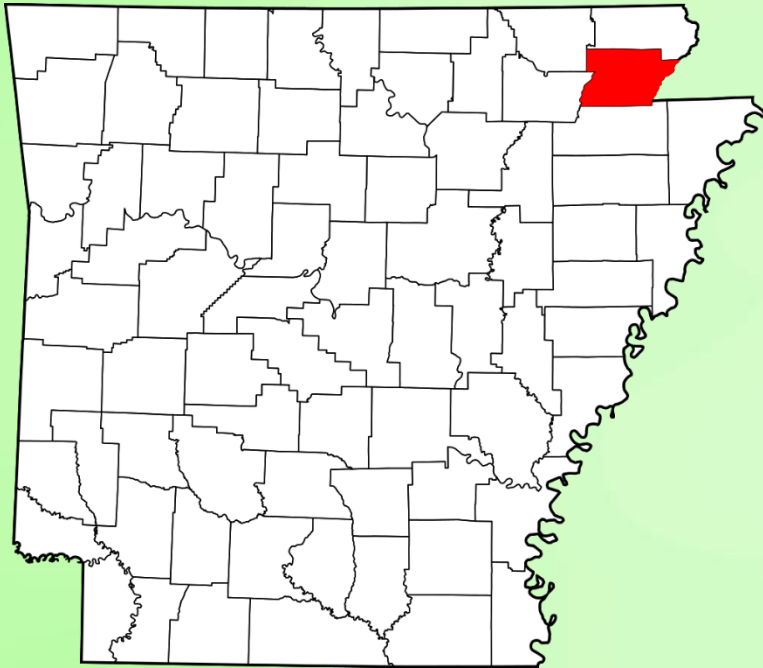
***Poplar Creek Watershed  
Improvement Project  
13-900***

***Greene County  
Conservation District***

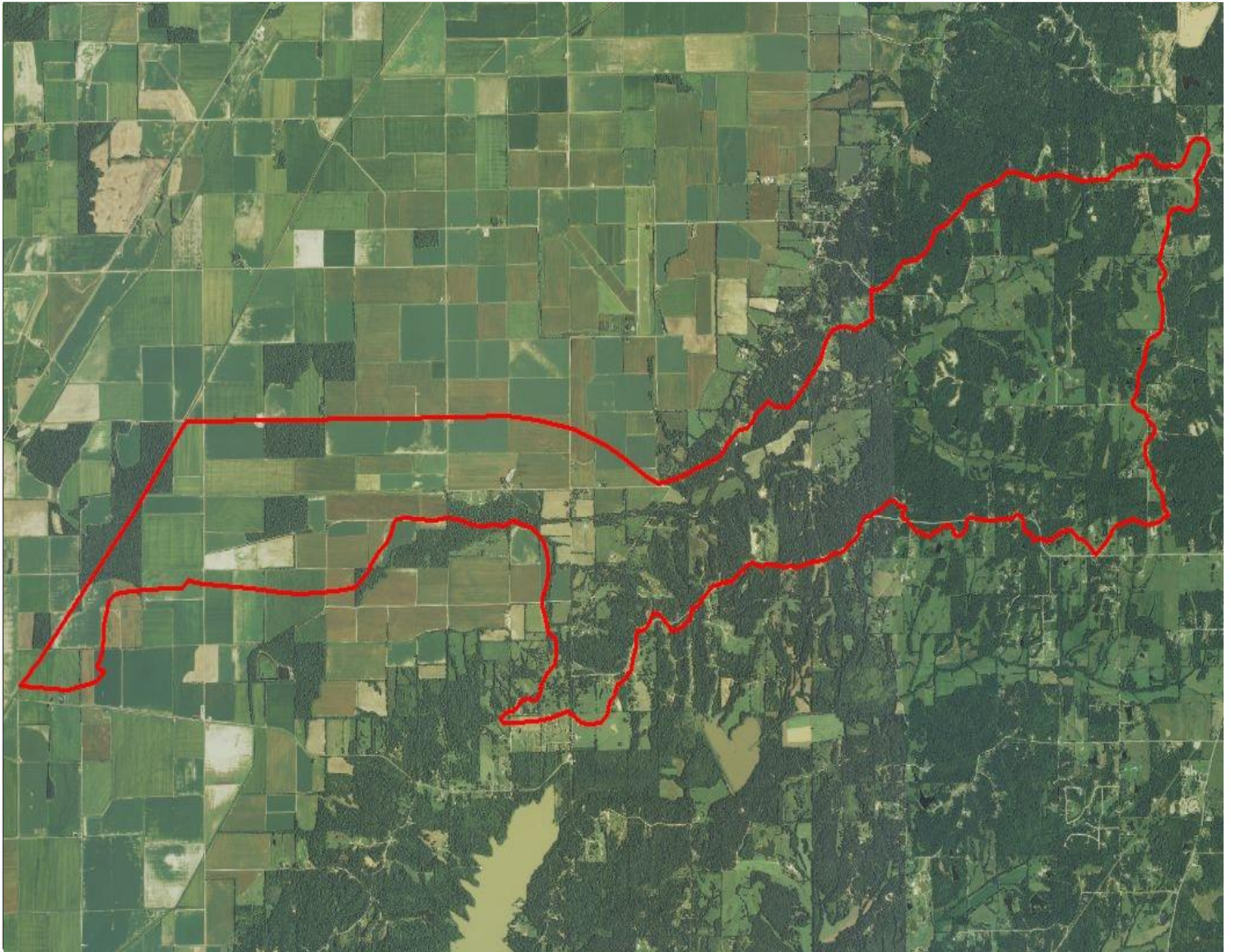
**July 1, 2013 – June 30, 2016**

# Project Location

---



Poplar Creek is a 6.6 mile creek that lies exclusively in Greene County just southwest of Paragould.



# About Poplar Creek

- Fed by 4,704 acres of drainage coming off of Crowley's Ridge.
- During major rain events, a substantial amount of sediment is transported off the ridge to Cache River.

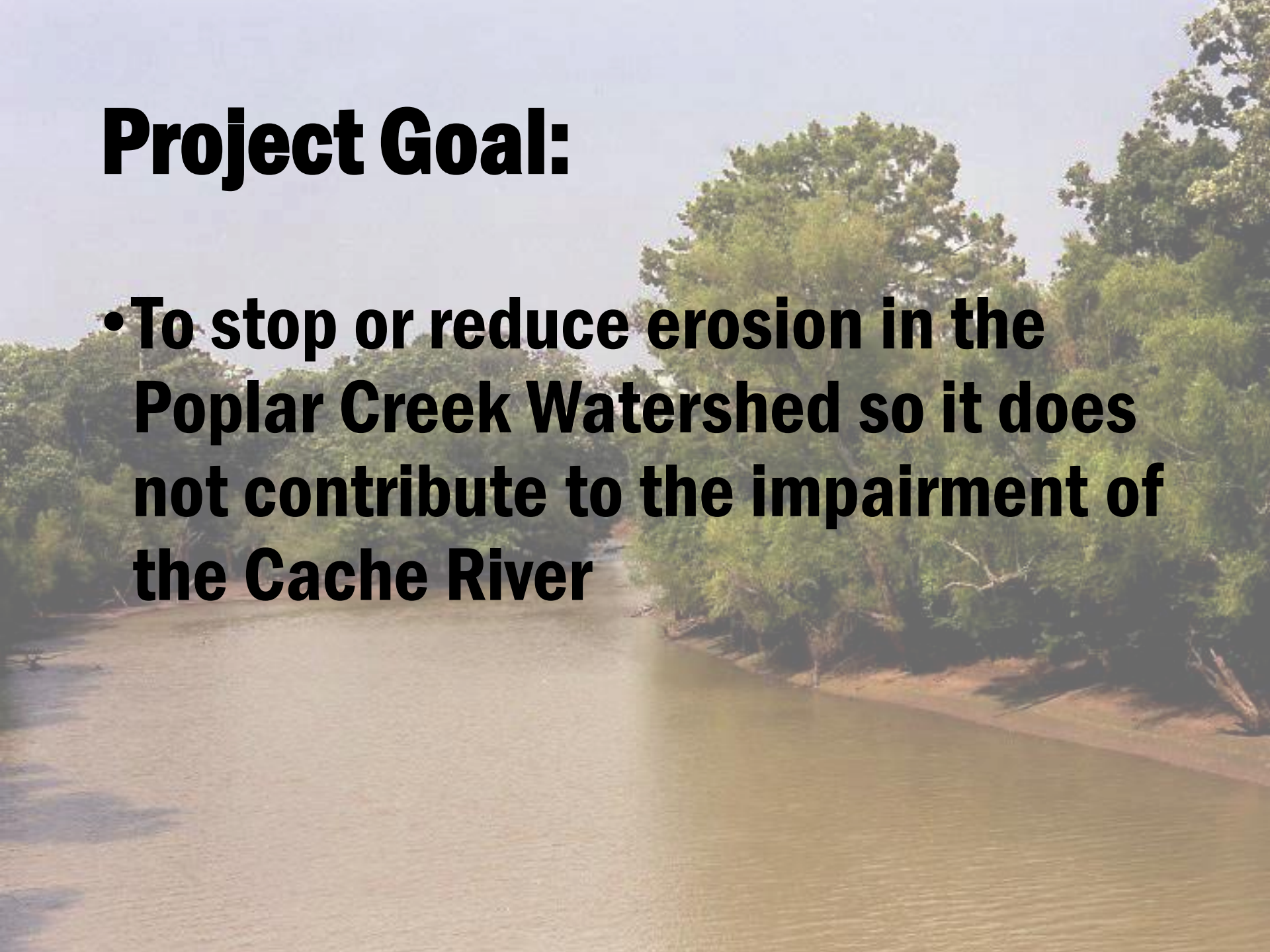


# Erosion Within the Watershed



# **Project Goal:**

- To stop or reduce erosion in the Poplar Creek Watershed so it does not contribute to the impairment of the Cache River**



# Project Funding:

EPA: \$106,920

DISTRICT: \$36,420

LANDOWNER: \$112,500

Total Match: \$148,920

Total Project Cost: \$255,840

# Best Management Practices:

- Critical Area Planting
- Fencing
- Forage & Biomass Planting
- Filter Strip
- Grade Stabilization Structure
- Heavy Use Area Protection
- Mulching
- Pond
- Structure for Water Control
- Irrigation Pipeline
- Watering Facility
- Tree/Shrub Establishment
- Livestock Pipeline



# First Outreach Meeting August 8, 2013



**Joey Massey, District Director,  
issued the Welcome to the  
Attendees**



**Chris Stowers, NRCS Soil  
Conservationist, conducted the  
Project Overview**

# Best Management Practices Implemented During First Year

**Erosion on Carr Farm**



**Forage and Biomass Planting  
on Carr Farm**



# Field Days 2014- 2015





**BMP's Implemented in Year 2- Crafton Farm  
Tree/Shrub Establishment & Preparation,  
Mulching, Pond, Critical Area Planting**

# Harris Farm

## Pond Construction-Mulching Levee



# To date, the following practices have been completed or commenced:

- 2,636 ft. of Irrigation Pipeline
- 38.9 acres of Forage & Biomass Planting
- 4 Ponds
- 7.5 acres of Mulching
- 7.5 acres of Critical Area Planting
- 5 acres of Tree/Shrub Prep & Establishment

# Remaining Practices Scheduled

- 26.1 acres of Forage & Biomass Planting
- 1 Pond
- 1 acre of Mulching
- 1 acre of Critical Area Planting
- 4 Grade Stabilization Structures

# Project Obstacles:

- Weather
- Staffing
- Implementation of 2014 Farm Bill
- Shifting workload priorities for partners



# Project Recommendations for Interested Applicants:

- Utilize the resources that ANRC has made available on-line
- Learn from past projects
- Get to know the ANRC staff. They are extremely helpful during all phases of the project



**Acknowledgements go to**

**EPA**

**ANRC**

**NRCS**

**Mt. Zion Baptist Church**

**and our**

**Greene County Landowners**



**QUESTIONS?**