



United States Department of Agriculture

NATURAL RESOURCES CONSERVATION SERVICE



Teri Nehls
NRCS Water Quality Specialist



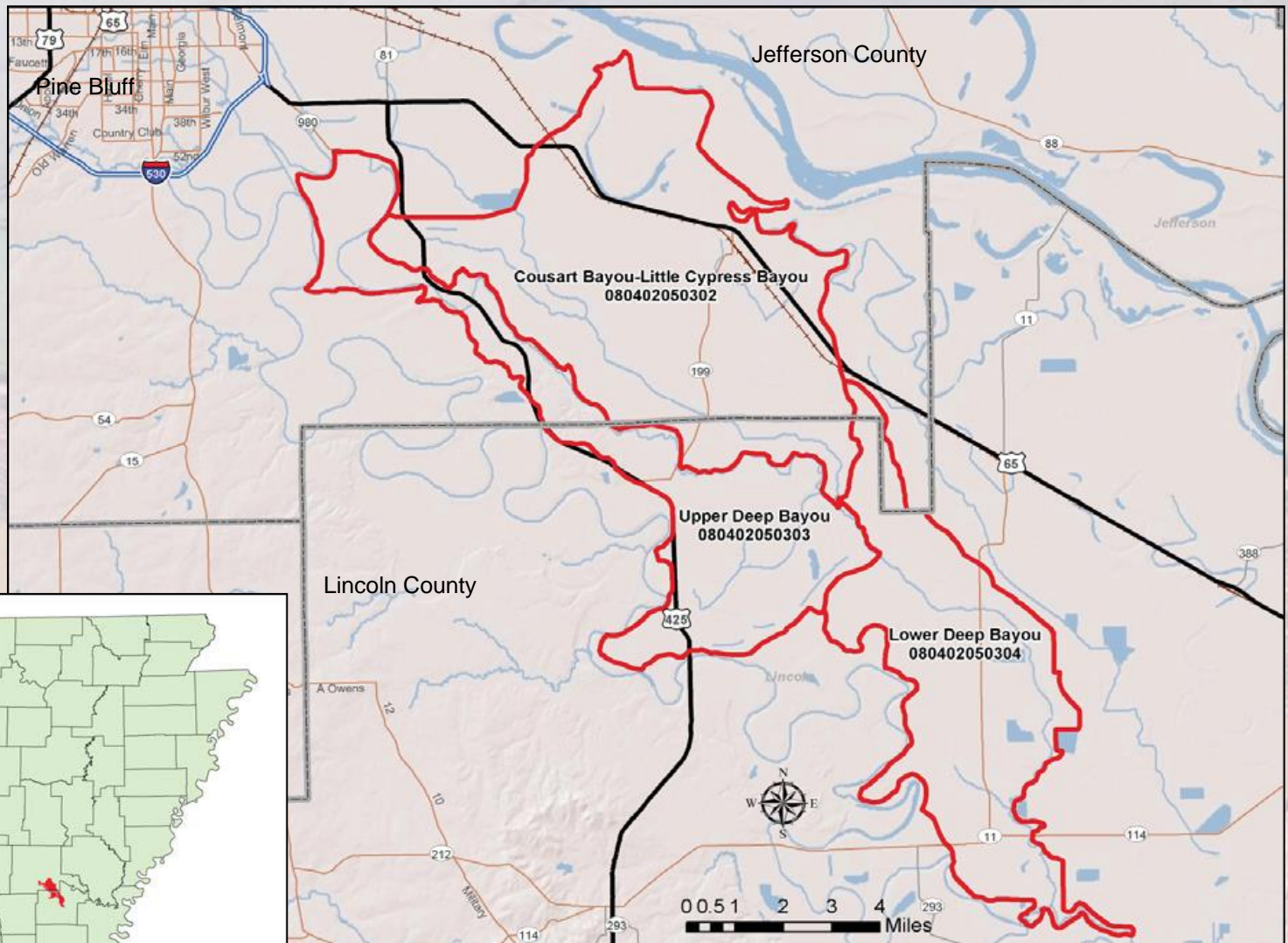
Outline

- NWQI Update
- NWQI Edge of Field Monitoring Update
- WRP/WRE

NRCS Programs and Water Quality

- EQIP: Environmental Quality Initiative Program
- NWQI: National Water Quality Initiative
- MRBI: Mississippi River Basin Initiative
- MRBI-WREP: MRBI-Wetland Reserve Easement Program
- RCPP: Regional Conservation Partnership Program
- ACEP-WRE: Agricultural Conservation Easement Program – Wetlands Reserve Easement
 - Formerly WRP: Wetlands Reserve Program
- CSP: Conservation Stewardship Program

NWQI



NWQI Update

- Since 2012:
 - Obligation: \$5.2 million
 - 176 contracts
 - Treated Acres: 28,431
 - 2 Edge of Field Monitoring sites

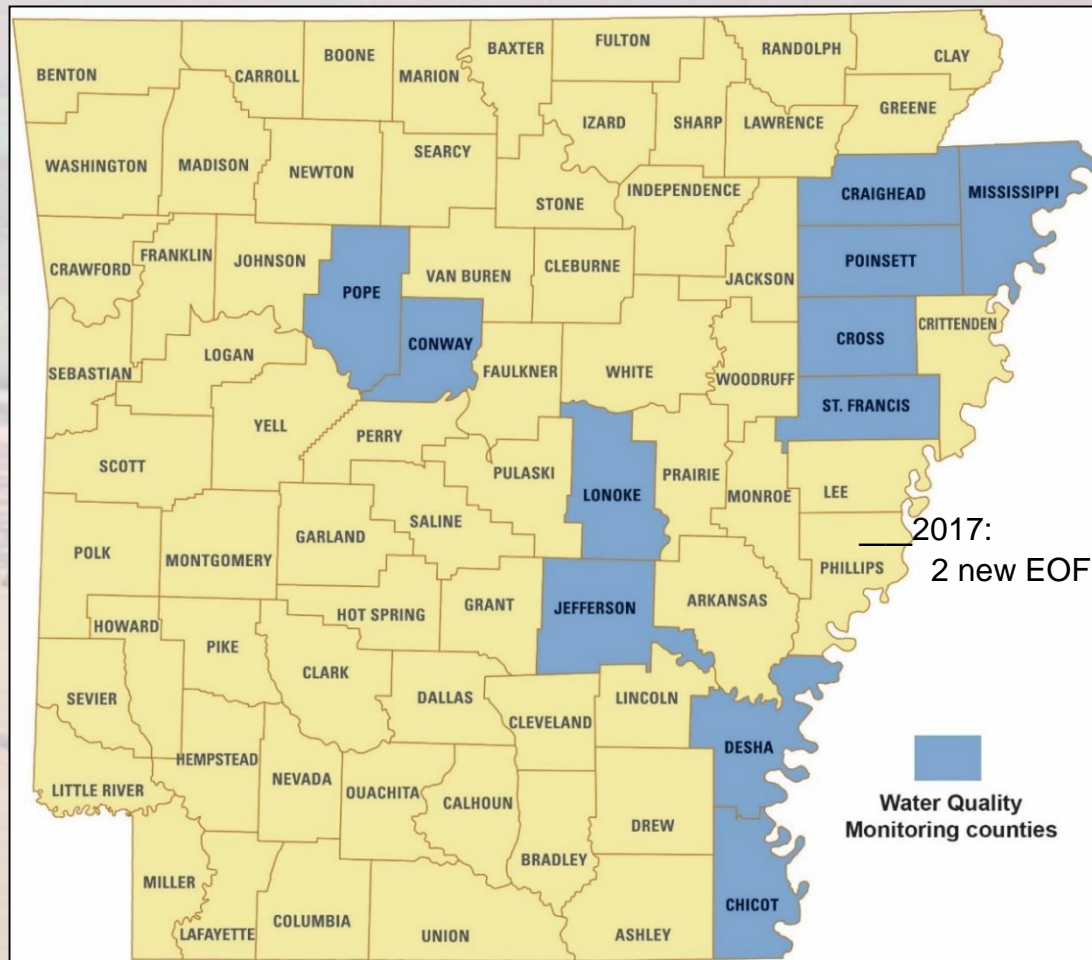
NWQI Practices Installed to Address Water Quality



- Cover Crop: 3,086.3 ac
 - Conservation Cover: 7.3 ac
 - Conservation Crop Rotation: 1,760.5 ac
 - Irrigation Pipeline: 30,286 ft
 - Irrigation Water Management: 25,491.1 ac
 - Nutrient Management: 3,086.3 ac
 - Residue Management:
 - No Till: 770 ac
 - Mulch Till/Ridge Till/Seasonal Till: 17,818.2 ac
 - Vegetative Barrier: 1,320 ft
 - Streambank & Shoreline Protection: 37 ft
- **working on total paid on each practice

Water Quality Edge of Field (EOF) Monitoring

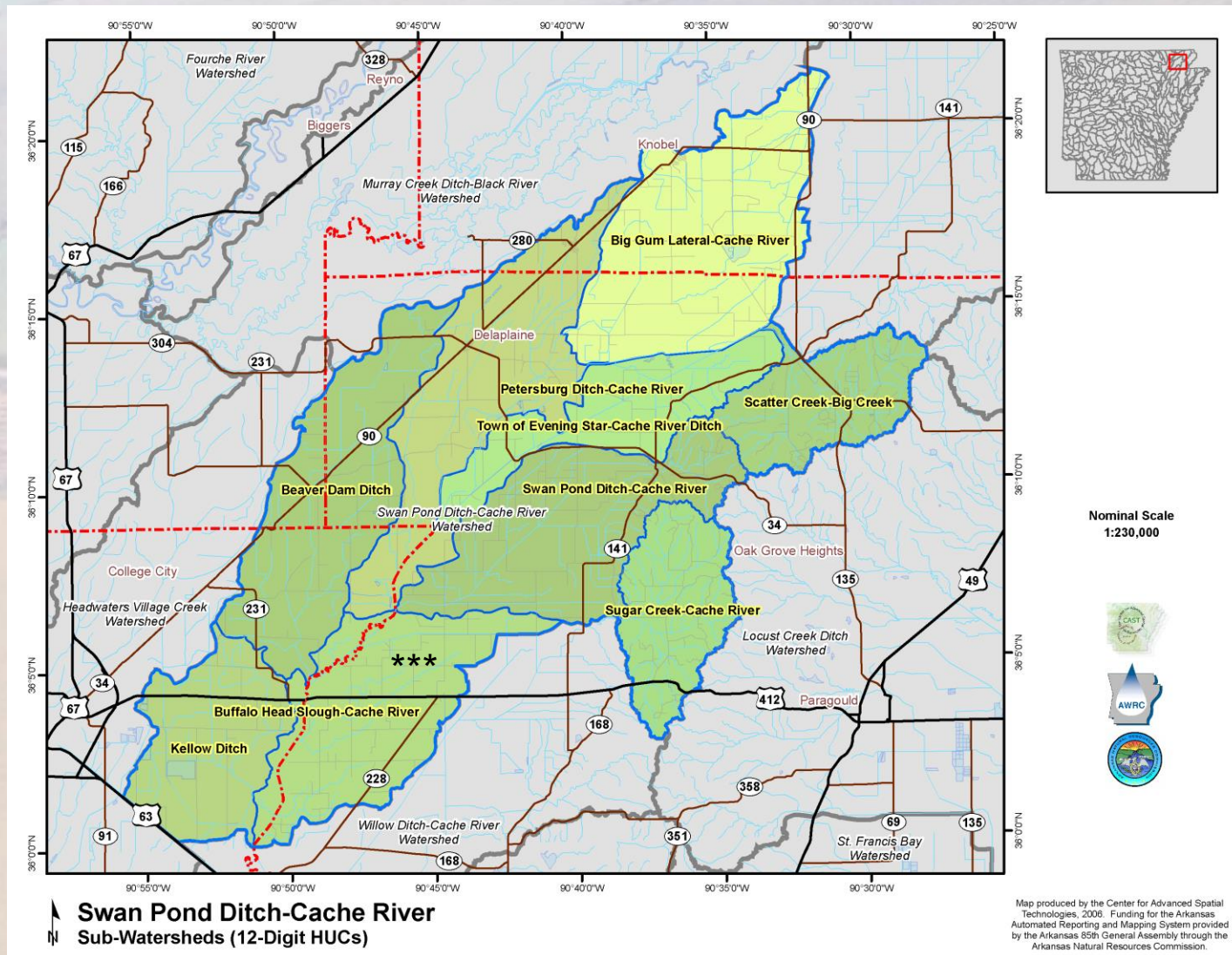
- 23 sites since 2012
 - 13 active
 - 8 completed
 - 2 canceled
- Treated acres: 8,791.8
- Obligated: \$3.38 million
- Added benefit
 - 20% increase in irrigation efficiency observed



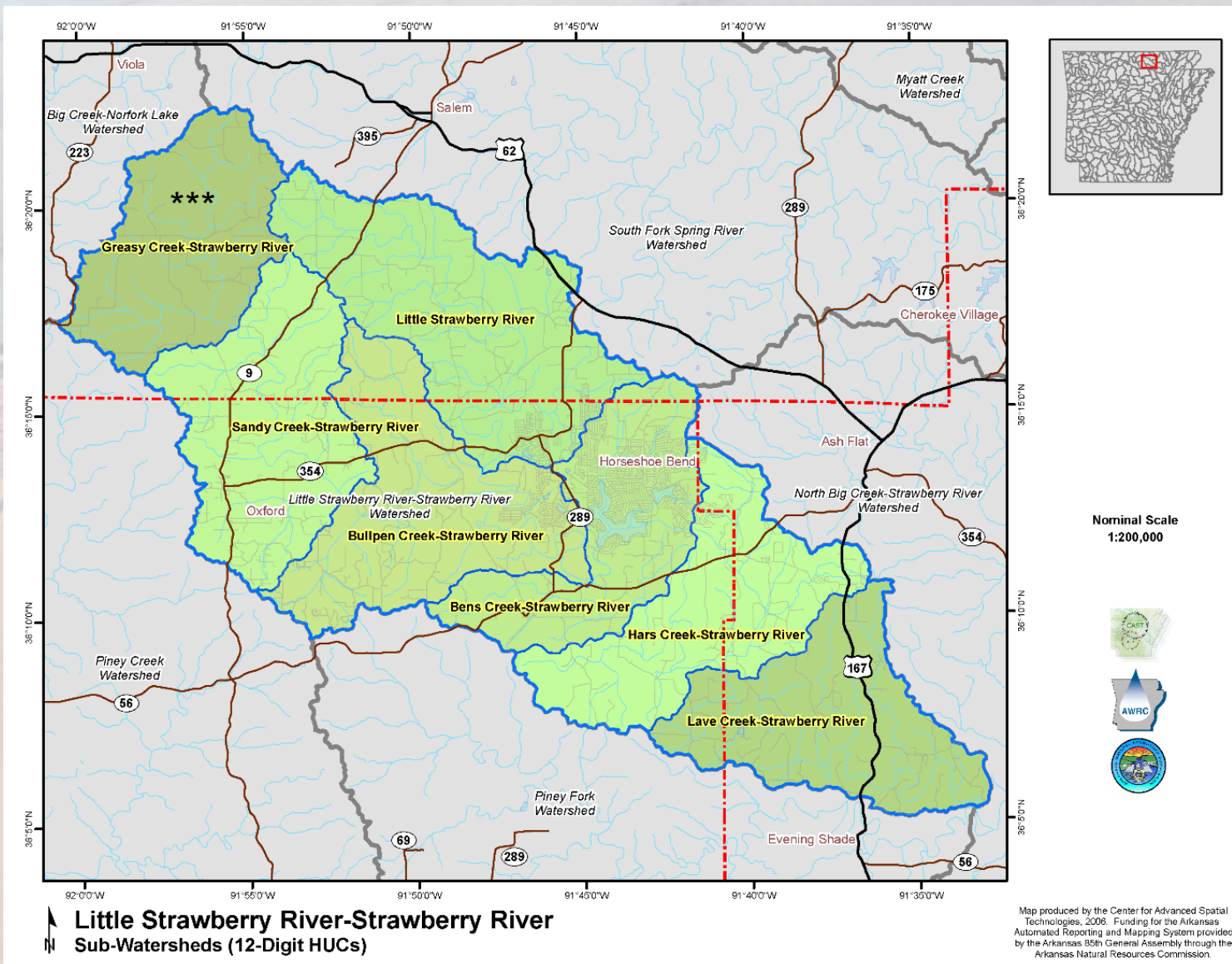
NWQI Pilot Program

- Started in 2017
- Year 1: HUC12 watershed-level resource assessment
- Year 2+: Funding for implementation of conservation practices
- FY2017: Buffalo Slough-Cache River Watershed
 - Located primarily in Greene county but includes the eastern part of Lawrence county
 - Still working on assessment
- Proposed FY2018: Greasy Creek-Strawberry River Watershed
 - Fulton county

Buffalo Slough-Cache River Watershed



Greasy Creek-Strawberry River Watershed



ACEP-WRE and WRP

- Easements 1992-June 2017

- Number: 655
- Acreage: 250,842

- FY17 ACEP-WRE

- Number: 17
- Acreage: 11,820
- *Obligation: \$33.7 million

- FY2016 ACEP-WRE

- Number: 18
- Acreage: 4,830
- *Obligated: \$14,372.31

- FY2015 ACEP-WRE

- Number: 7
- Acreage: 6,785.6
- *Obligated: \$30,651.46

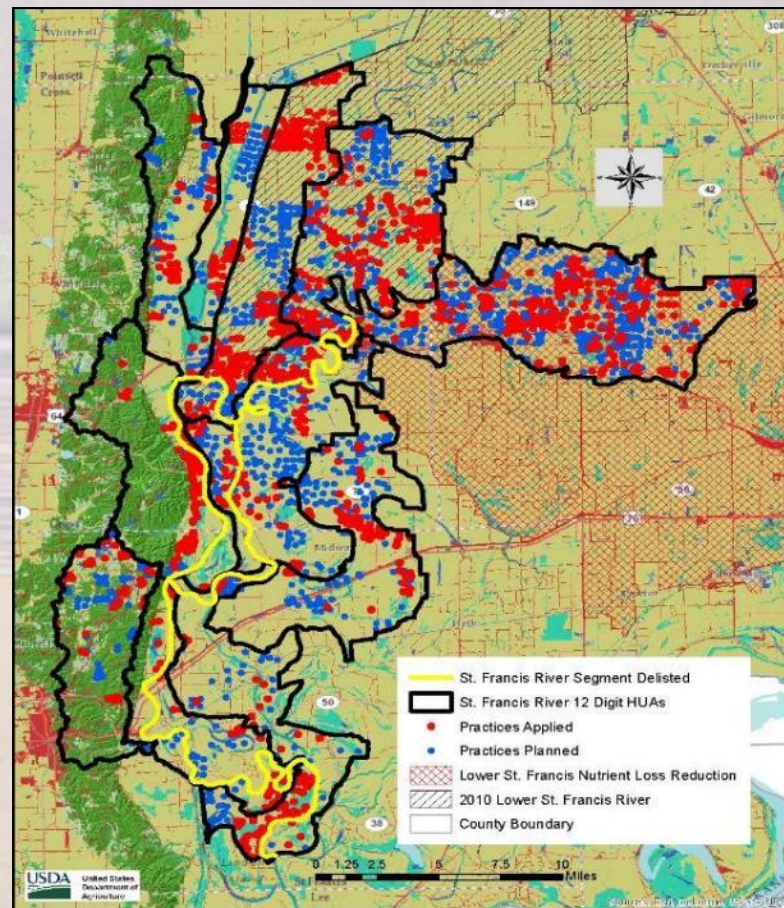


*includes acquisition and restoration

Targeted Conservation Works

ST. FRANCIS RIVER SUCCESS – DELISTED SEGMENTS

- Erosion from row crop fields led to high turbidity levels in Arkansas's St. Francis River.
- ADEQ added a 55.9-mile section and a 17.1-mile section of the river to the state's 303(d) list of impaired waters for turbidity in 2006.
- Producers implemented conservation practices to reduce sediment from row crop fields.
- NRCS provided technical and financial assistance from regular programs plus 5 MRBI projects.
- Turbidity levels declined and ADEQ removed segments from the 2014 303(d) list for turbidity.



Importance of Arkansas Conservation Partnership



Arkansas Conservation Partnership:

- Arkansas Natural Resources Commission
- Arkansas Association of Conservation Districts
- Arkansas Association of Conservation District Employees
- University of Arkansas Cooperative Extension Service
- University of Arkansas, Pine Bluff
- Arkansas State University and ARS
- Arkansas Resource Conservation and Development Council, Inc.
- **More than 80 different partners help make Arkansas's landscape initiatives successful**

Helping people help the land!

Teri Nehls
teri.nehls@ar.usda.gov
501-301-3179

USDA is an equal opportunity provider, employer and lender