



STATUS OF MRBI

VOLUNTARY CONSERVATION- WORKING?

STRENGTHEN PARTNERSHIPS?

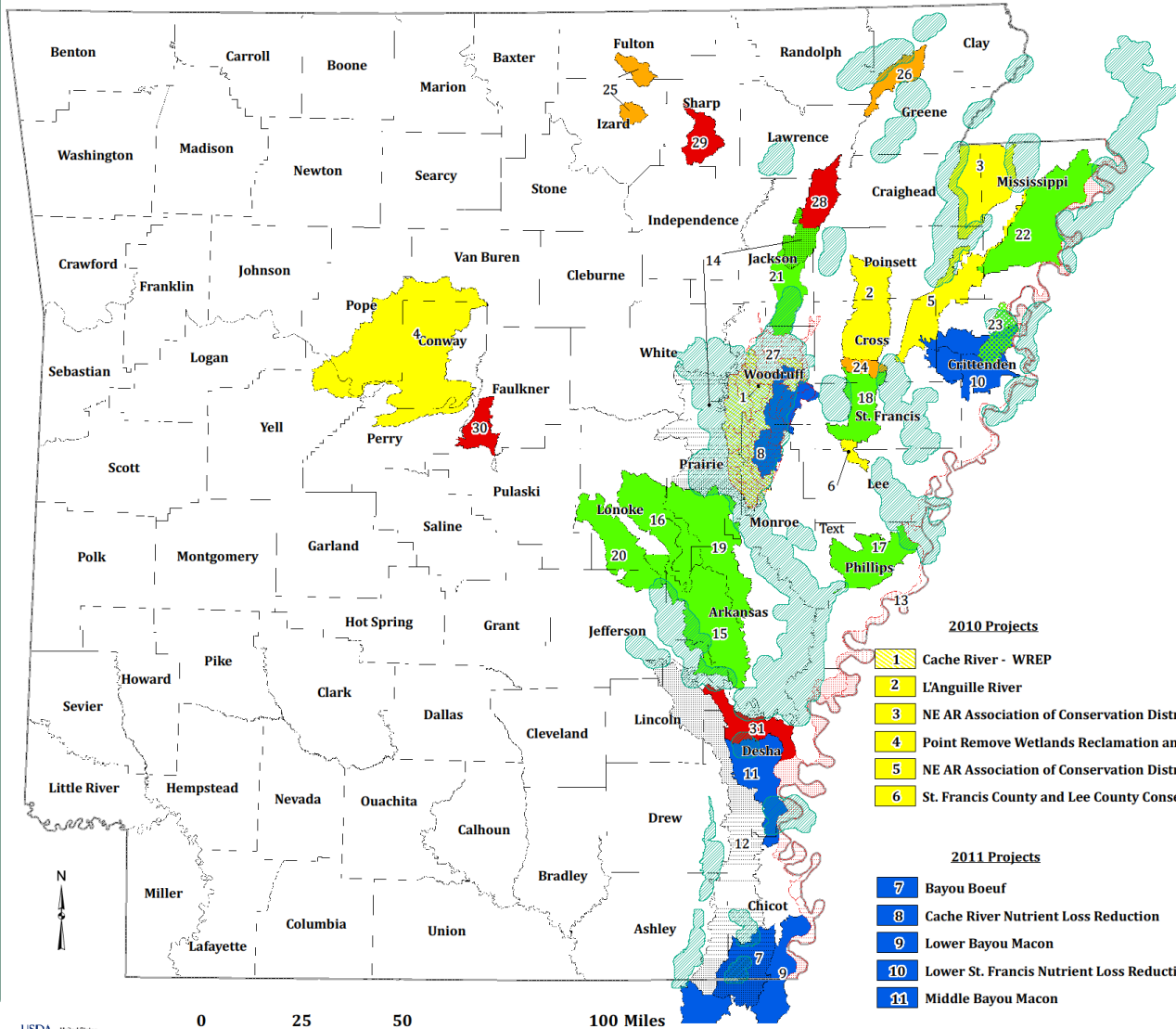
MORE CONSERVATION GETTING ON GROUND?

IMPACT ON LOCAL ECONOMY?





# Mississippi River Basin Healthy Watershed Initiative Projects



- 2012 Projects**
- 12 Arkansas Game and Fish Commission - WREP
  - 13 Mississippi River Trust - WREP
  - 14 The Nature Conservancy - WREP
  - 15 Bayou Meto Arkansas County
  - 16 Bayou Meto Middle
  - 17 Big
  - 18 East Arkansas Enterprise Community BMP
  - 19 Grand Prairie
  - 20 Lower Arkansas Upper
  - 21 Middle Cache River
  - 22 Tyrnosa River
  - 23 Wapanocca Lake
- 2015 Projects**
- 24 Caney Creek
  - 25 Strawberry
  - 26 Upper Cache
- 2010 Projects**
- 1 Cache River - WREP
  - 2 L'Anguille River
  - 3 NE AR Association of Conservation Districts Little River Ditches
  - 4 Point Remove Wetlands Reclamation and Irrigation District
  - 5 NE AR Association of Conservation Districts
  - 6 St. Francis County and Lee County Conservation Districts
- 2011 Projects**
- 7 Bayou Boeuf
  - 8 Cache River Nutrient Loss Reduction
  - 9 Lower Bayou Macon
  - 10 Lower St. Francis Nutrient Loss Reduction
  - 11 Middle Bayou Macon
- 2016 Projects**
- 13 Mississippi River Trust - WREP
  - 27 The Nature Conservancy - WREP
  - 28 Cache-Willow-Podo
  - 29 Middle Strawberry
  - 30 Tupelo Bayou-Beaverdam Creek
  - 31 Upper Bayou Macon
- 2017 Projects**
- Tri-State Mississippi Alluvial Valley - WREP
  - 13 Mississippi River Trust - WREP

0 25 50 100 Miles





# MRBI PROJECTS 2010-2016

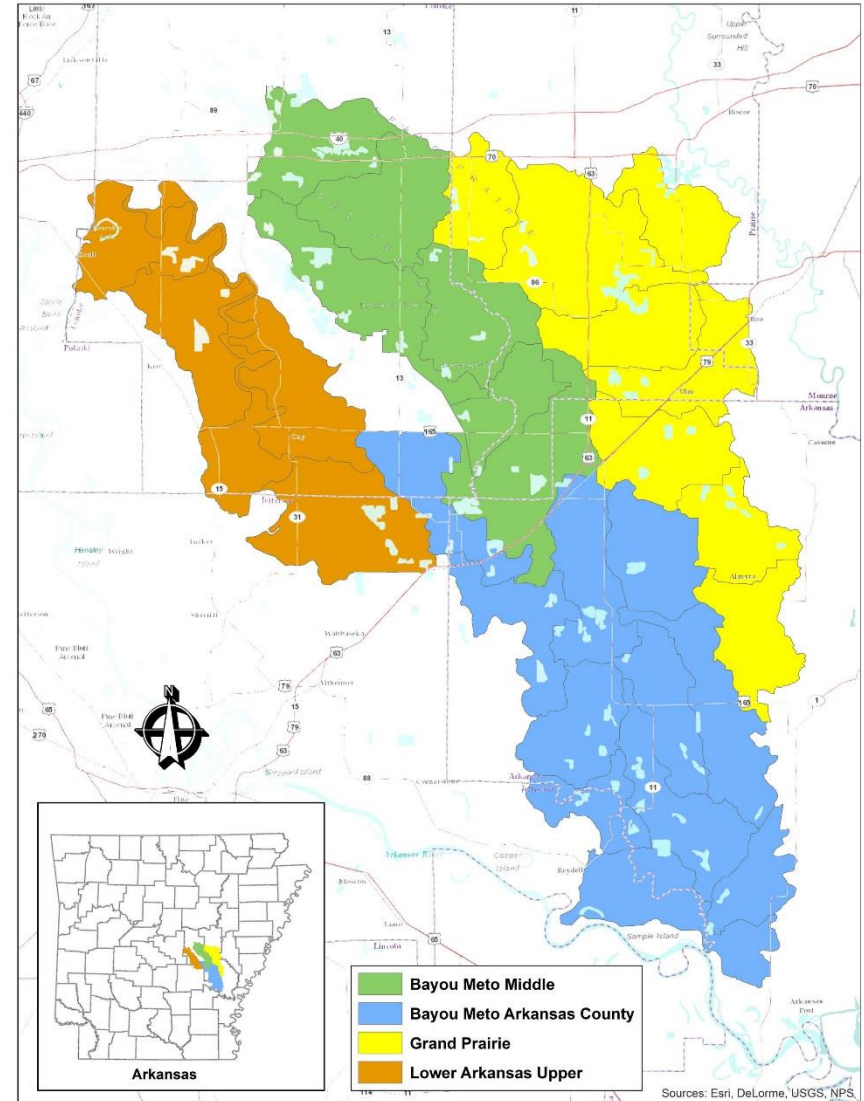
| Project                                 | # of contracts | Contract Acres | Obligated Dollars   | Producer Contribution |
|-----------------------------------------|----------------|----------------|---------------------|-----------------------|
| Cache Willow Podo                       | 8              | 1,353          | \$510,046           | \$167,000             |
| Middle Strawberry                       | 12             | 1,339          | \$198,982           | \$66,328              |
| Tupelo Bayou Beaverdam Creek            | 3              | 2,100          | \$373,783           | \$124,594             |
| Upper Bayou Macon                       | 8              | 2,880          | \$799,899           | \$266,633             |
| Caney Creek                             | 12             | 911            | \$842,542           | \$280,847             |
| Strawberry River                        | 37             | 6,506          | \$981,596           | \$654,397             |
| Upper Cache River                       | 18             | 3,343          | \$1,321,319         | \$440,439             |
| Bayou Meto Arkansas County              | 86             | 35,330         | \$9,144,908         | \$3,048,302           |
| Bayou Meto Middle                       | 118            | 28,498         | \$10,374,884        | \$6,916,589           |
| Big River Watershed                     | 57             | 5,907          | \$2,658,349         | \$886,116             |
| East Arkansas Enterprise-L'Anguille     | 67             | 11,867         | \$3,061,968         | \$1,020,656           |
| Grand Prairie                           | 135            | 42,682         | \$9,615,614         | \$6,410,409           |
| Lower Arkansas Upper                    | 161            | 35,984         | \$9,004,405         | \$6,002,937           |
| Middle Cache River                      | 99             | 14,198         | \$4,530,190         | \$1,510,063           |
| Tyronza River Watershed                 | 61             | 11,513         | \$3,937,597         | \$1,312,532           |
| Wapanocca Lake Watershed                | 82             | 10,946         | \$982,011           | \$327,337             |
| Bayou Boeuf                             | 33             | 12,226         | \$1,611,901         | \$537,300             |
| Cache River                             | 31             | 7,678          | \$1,733,452         | \$577,817             |
| Lower Bayou Macon                       | 18             | 13,792         | \$1,370,175         | \$456,725             |
| Lower St. Francis                       | 131            | 20,651         | \$3,997,291         | \$1,332,430           |
| Middle Bayou Macon                      | 110            | 22,771         | \$5,813,101         | \$1,937,700           |
| L'Anguille River                        | 88             | 35,539         | \$3,507,951         | \$1,169,317           |
| NE AR AACD Little River Ditches         | 117            | 17,918         | \$3,247,720         | \$1,082,573           |
| NE AR AACD Lower St. Francis            | 112            | 23,370         | \$2,581,341         | \$860,447             |
| Lee and St. Francis Outlet Larkin Creek | 45             | 5,317          | \$1,445,458         | \$481,819             |
| Point Remove                            | 189            | 51,691         | \$8,629,636         | \$2,876,545           |
| <b>Total</b>                            | <b>1838</b>    | <b>426,310</b> | <b>\$92,276,119</b> | <b>\$40,747,852</b>   |





# SUMMARY OF 4 MRBI PROJECTS-TARGETING

| Project                 | Contracts | Acres treated | Obligated Funds |
|-------------------------|-----------|---------------|-----------------|
| Bayou Meto Arkansas Co. | 86        | 35,330        | \$9,144,908     |
| Bayou Meto Middle       | 118       | 28,498        | \$10,374,884    |
| Grand Prairie           | 135       | 42,682        | \$9,615,614     |
| Lower Arkansas Upper    | 161       | 35,984        | \$9,004,405     |
|                         | 500       | 142,494       | \$38,139,811    |



Sources: Esri, DeLorme, USGS, NPS.





208,755 tons of sediment saved=Busch Stadium 32 feet of soil.

1,206, 227 lbs. of Nitrogen and Phosphorus has been kept out of the waterways. This equates to 360,387 bags of 13-13-13 fertilizer.

129.6 billion gallons of groundwater conserved per year =covering Monroe County with 1 foot of water



# PARTNERS





United States Department of Agriculture

# TAILWATER RECOVERY



USDA is an equal opportunity provider and employer



United States Department of Agriculture

# COVER CROP



USDA is an equal opportunity provider and employer





United States Department of Agriculture



USDA is an equal opportunity provider and employer



United States Department of Agriculture



USDA is an equal opportunity provider and employer



United States Department of Agriculture



USDA is an equal opportunity provider and employer



United States Department of Agriculture



USDA is an equal opportunity provider and employer



United States Department of Agriculture

# NUTRIENT MANAGEMENT



USDA is an equal opportunity provider and employer





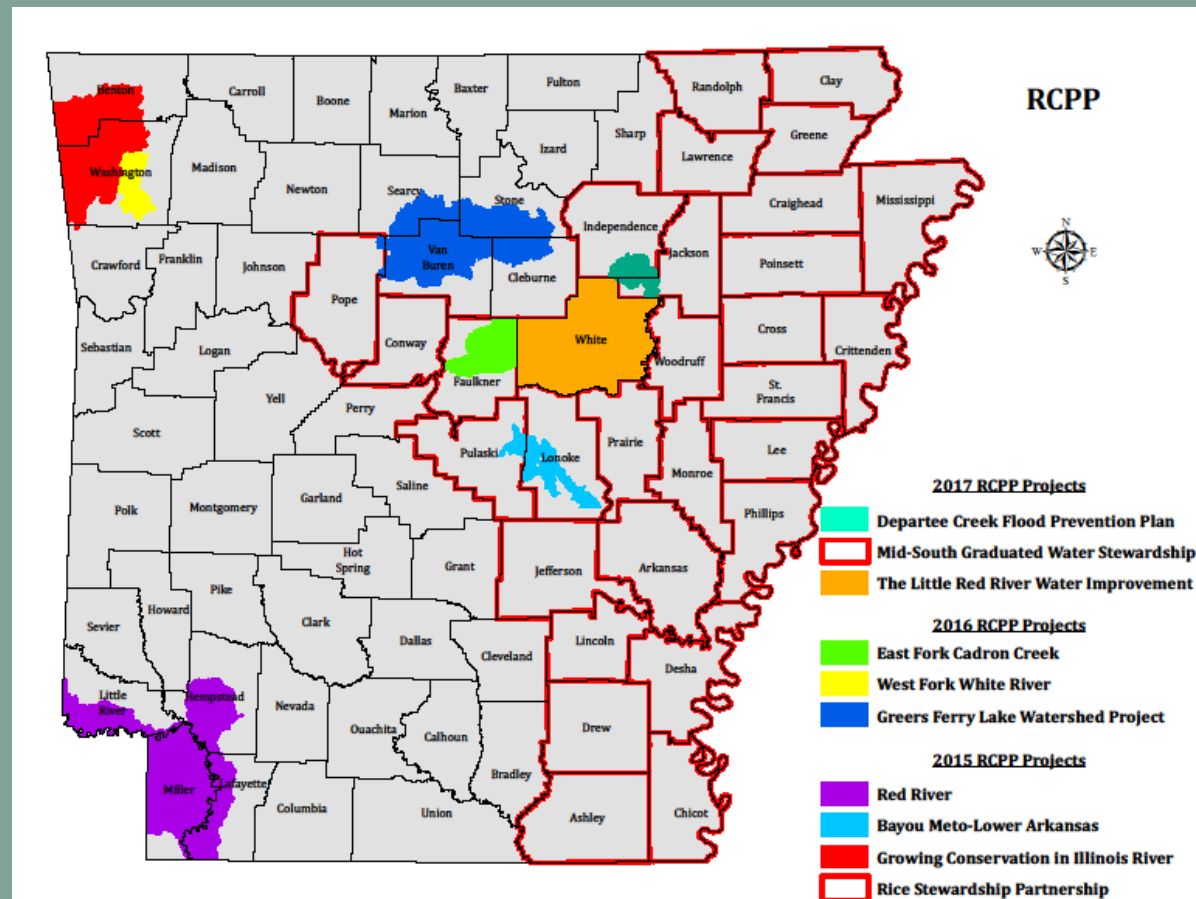
- Results: MRBI has shown that focused water quality efforts in high priority areas can be effective in building strong partners, increasing trust and partnerships with landowners and farmers, and getting more conservation systems on the ground.



# REGIONAL CONSERVATION PARTNERSHIP PROGRAM

Arkansas conservation partners have 10 RCPP projects:

- 4 State-\$4.2 million
- 2 National-\$17 million
- 4 Critical Conservation Area (CCA)-\$7.4 million
- Total-\$28.6 million





# EXPECTED WATER QUALITY RESULTS

•Reduced nitrogen and phosphorus loading into waterways

•Reduced sediment from sheet & rill erosion

•Reduced sediment from irrigation-induced erosion





| <b>Project Sponsors</b>                          | <b>Monitoring Partners</b>              |
|--------------------------------------------------|-----------------------------------------|
| Local Conservation Districts                     | University of Arkansas                  |
| Bayou Meto Water Mgmt                            | University of AR Extension              |
| Ducks Unlimited<br>USA Rice                      | Arkansas State University               |
| The Nature Conservancy                           | Agricultural Research<br>Service        |
| IRWP, Little Red River<br>Irrigation District    | University of Arkansas at<br>Pine Bluff |
| RC&D Council                                     |                                         |
| Departee Creek Watershed<br>Improvement District |                                         |





## To File a Complaint of Discrimination:

The U. S. Department of Agriculture (USDA) prohibits discrimination in all of its programs and activities on the basis of race, color, national origin, age, disability, and where applicable, sex, marital status, familial status, parental status, religion, sexual orientation, political beliefs, genetic information, reprisal, or because all or part of an individual's income is derived from any public assistance program. (Not all prohibited bases apply to all programs.) Persons with disabilities who require alternative means for communication of program information (Braille, large print, audiotape, etc.) should contact USDA's TARGET Center at (202) 720-2600 (voice and TDD).

To file a complaint of discrimination, write to USDA, Assistant Secretary for Civil Rights, Office of the Assistant Secretary for Civil Rights, 1400 Independence Avenue, S. W., Stop 9410, Washington, DC 20250-9410, or call toll-free at (866) 632-9992 (English) or (800) 877-8339 (TDD) or (866) 377-8642 (English Federal-relay) or (800) 845-6136 (Spanish Federal-relay). USDA is an equal opportunity provider and employer.





United States Department of Agriculture

**Contact information:**  
**Amanda Mathis-NRCS**  
**501-301-3162 office**  
**or**  
**Dianne Schlenker-NRCS**  
**501-301-3152 office**

**Thank you for your time and attention!**



USDA is an equal opportunity provider and employer