

BAXTER COUNTY CONSERVATION DISTRICT FY16-200



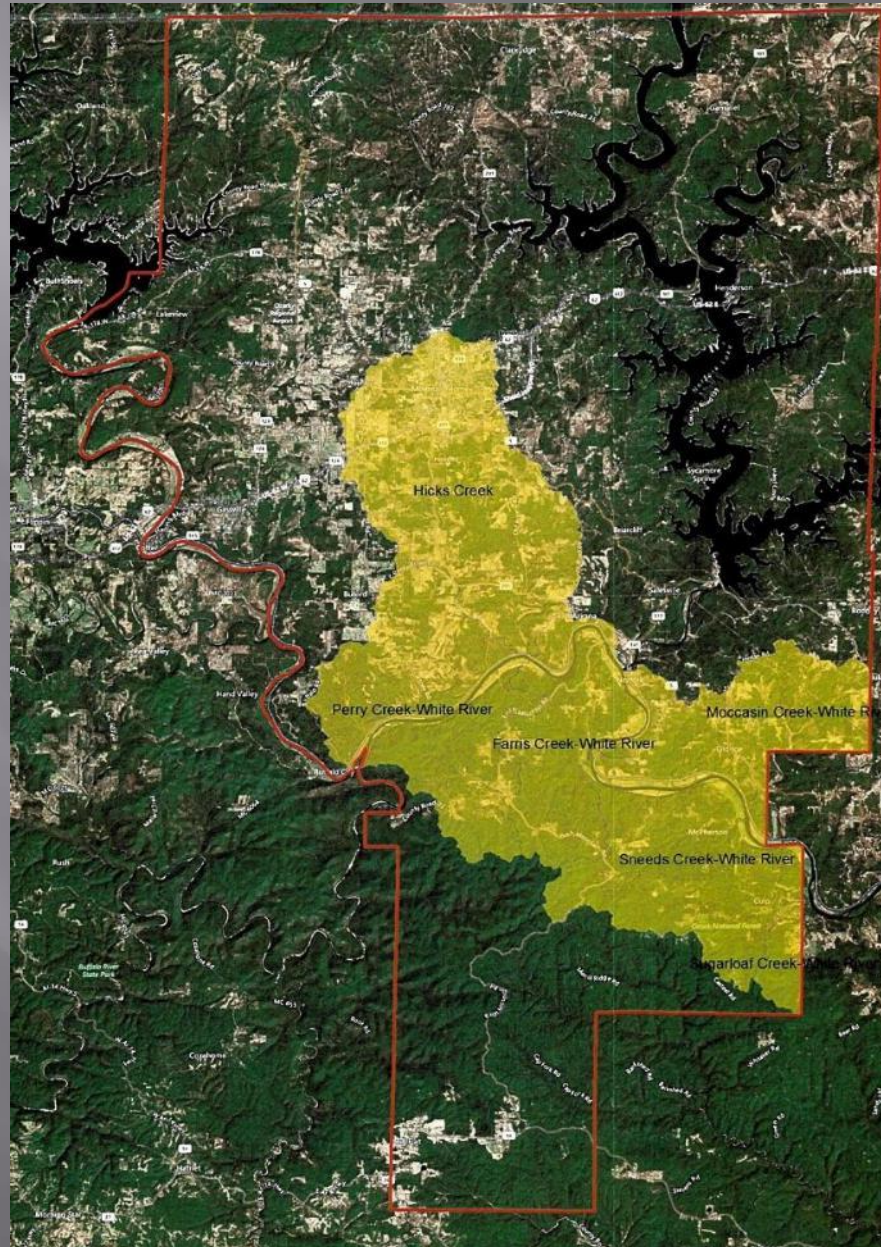
Those aiding in the project

- ▣ Baxter County Conservation District
- ▣ Arkansas Natural Resources Commission
- ▣ US Environmental Protection Agency
- ▣ Arkansas Association of Conservation Districts
- ▣ Baxter County Cattlemen's Association
- ▣ Baxter County Cooperative Extension Service
- ▣ Farmers of Baxter County

Improving The Land And Water Quality



Hicks Creek Watershed



Best Management Practices Cost Share

- ▣ Cross Fencing
- ▣ Pasture Establishment
- ▣ Brush Management
- ▣ Watering Facilities
- ▣ Heavy Use Areas
- ▣ Livestock Pipeline
- ▣ Spring Development
- ▣ Pond With Tank

Fencing





Cool Season Pasture Establishment



Equipment for Rent

- ▣ Two No-Till Drills
- ▣ Two Pull-Type Sprayers
- ▣ One Field Roller

Brush Management



Watering Facilities





Heavy Use Areas



Heavy Use Areas



Outreach to Improve Water Quality

- ▣ Field Day on April 13
- ▣ Cattleman's Meeting
- ▣ Almost 700 Quarterly Newsletters
- ▣ Email over 600 Newsletters
- ▣ Radio Advertisements
- ▣ Visit Local Feed Stores
- ▣ Farm Bureau Meetings

Accomplishments

- ▣ Developed 60 Farm Plans
- ▣ 24 Completed Contracts
- ▣ 55 BMP's Implemented
- ▣ 106 Return Farm Visits
- ▣ Farmer awareness of water quality

Questions?

- ▣ Baxter County Conservation District
 - ▣ Hicks Creek-White River
 - ▣ Watershed Project
 - ▣ FY16-200